

Supporting information

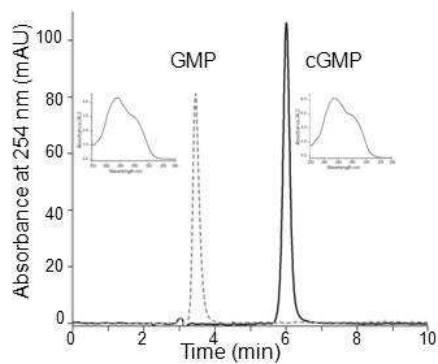
Detergents Stabilize the Conformation of Phosphodiesterase 6[†]

Bo Y. Baker[‡], and Krzysztof Palczewski^{‡}*

[‡]Department of Pharmacology, School of Medicine, Case Western Reserve University,
Cleveland, Ohio 44106, USA.

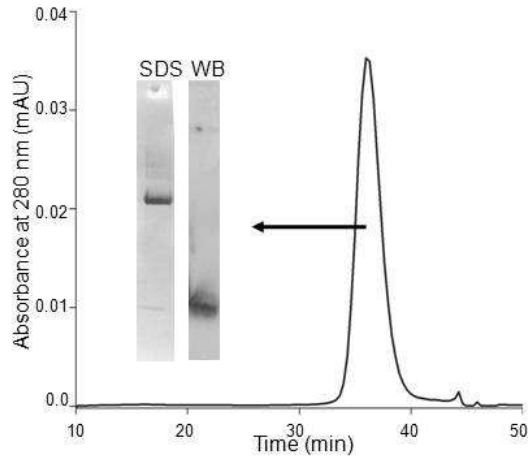
*To whom correspondence should be addressed: E-mail: Krzysztof Palczewski, Ph.D.
(kxp65@cwru.edu). Phone: (216) 368-4631. Fax: (216) 368-1300.

Supplemental Figure 1



Supplemental Figure 1. Nucleotide analyses by HPLC. Chromatograms of authentic GMP and cGMP standards are shown. The absorbance spectrum of the nucleotide present in the peak fractions of each chromatogram is shown in the inset for that chromatogram.

Supplemental Figure 2



Supplemental Figure 2. Size exclusion chromatography (SEC) of PDE6 in the presence of C_8E_4 . PDE6 eluted from the column as a single sharp peak. The fraction from the peak was analyzed by SDS-PAGE (insert: SDS). PDE6 α and PDE6 β (90 kDa) ran at the top of the gel, whereas PDE γ (13 kDa) was near the bottom. The presence of P γ was confirmed by immunoblotting with anti-P γ antibody (insert: WB).